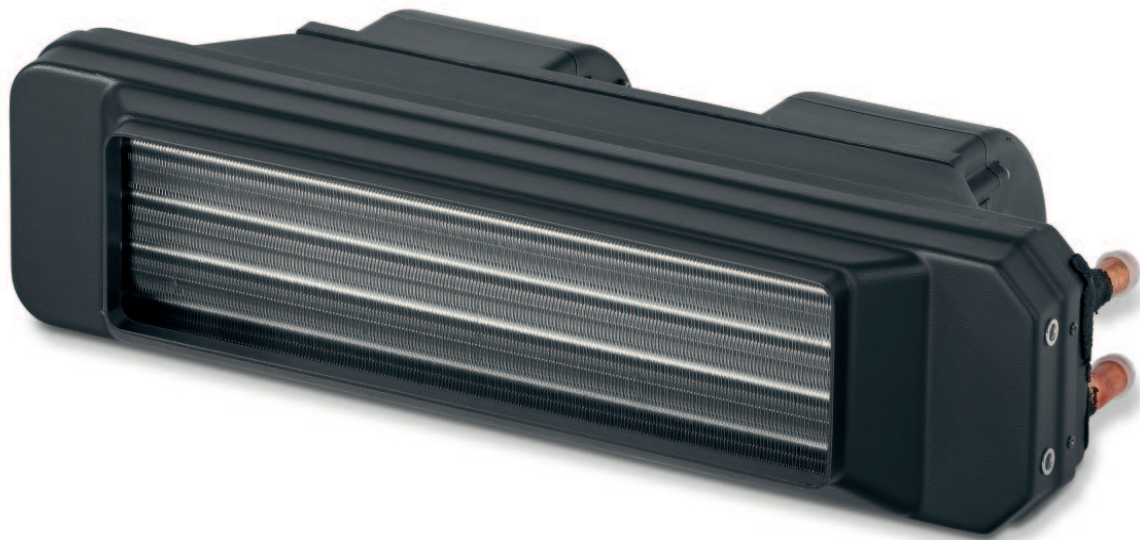


## Integrated heating systems delivering 3.8 to 13.0 kW heating performance for commercial vehicles

Comfortable warmth in commercial vehicles & minibuses



The ideal solutions for generating warmth in minibuses and commercial vehicles, this line of integrated heating systems is highly versatile. They can be installed either under the dashboard or under the roof, any of these vehicles. What sets these heating systems apart are the durable, high-efficiency fans and blowers that provide a constant airflow. Thus, these heating solutions are not only reliable, they also enjoy a long service life.

Their versatility is underscored by the variety of available accessories and vehicle-specific installation kits, including control units, air vents and ducts.

- Heating solutions deliver high performance heating from 3.8 to 13.0 kW
- Versatile installation options under dash or roof allow for optimum integration in diverse vehicle designs
- High thermodynamic efficiency as related to the overall dimensions
- Durable, highest quality components from proven series production
- Require little or no maintenance

#### Models:

Sydney, Stoccolma, Houston, Toronto, Nevada, Phoenix, Cyprus



Truck



Light-duty Vehicles



Bus



Rail



Off-Highway



Defense



Special Vehicles

**Technical specifications:**

Heating unit	Sydney	Stoccolma	Houston	Toronto	Nevada	Phoenix	Cyprus
Heating performance (kW)	3.8	3.8	6.5	7.0 2.4 <sup>(1)</sup>	7.7	8.6	13.0
Nominal voltage (V)	12/24						
Max. operation temperatur (°C)	45°C						
Max. power consumption (A) at 12 V	3.5	3.5	17.4	12.0	20.0	10.0	28.0
Max. air flow evaporator blower (m³/h)	170	170	420	450	630	450	800
Dimensions L x W x H (mm)	260 x 180 x 130	270 x 180 x 280	220 x 230 x 160	590 x 380 x 115	570 x 460 x 175	360 x 235 x 128	550 x 305 x 180
Weight (kg)	1.5	2.5	3.3	3.5	6.5	3.5	6.0

(1) = Electrical unit, only 24 V

Please feel free to contact us for further information about an individual climate solution including air vent and duct, control element and mounting kit.